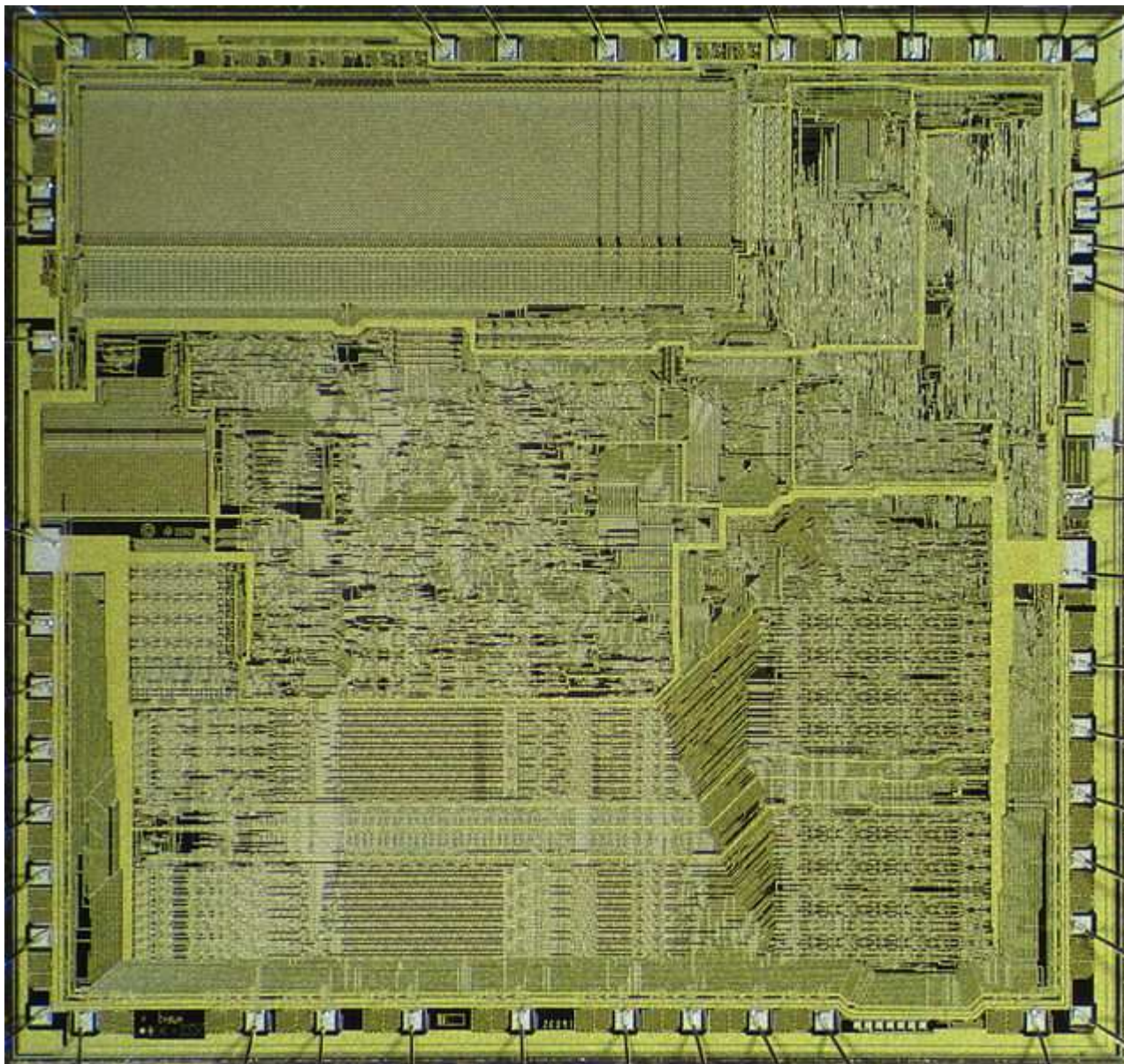


File:NS NS16032 die2.JPG



Size of this preview: **637 × 600 pixels**. Other resolutions: **255 × 240 pixels** | **510 × 480 pixels** | **816 × 768 pixels** | **1,088 × 1,024 pixels** | **2,176 × 2,048 pixels** | **3,446 × 3,244 pixels**.

[Original file](#) (3,446 × 3,244 pixels, file size: 10.89 MB, MIME type: image/jpeg)

File information

Structured data

Captions

[Edit](#)

English

Add a one-line explanation of what this file represents

Summary

Description English: Die shot of National Semiconductor 16032 microprocessor (NS16032SD-6).

Date 26 November 2013, 20:49:14

Source Own work

Author [Pauli Rautakorpi](#)

Licensing

I, the copyright holder of this work, hereby publish it under the following license:

This file is licensed under the [Creative Commons Attribution 3.0 Unported](https://creativecommons.org/licenses/by/3.0/de) (<https://creativecommons.org/licenses/by/3.0/de>[ed.en](https://creativecommons.org/licenses/by/3.0/de)) license.

You are free:

- **to share** – to copy, distribute and transmit the work
- **to remix** – to adapt the work


Under the following conditions:

- **attribution** – You must give appropriate credit, provide a link to the license, and indicate if changes were made. You may do so in any reasonable manner, but not in any way that suggests the licensor endorses you or your use.



File history

Click on a date/time to view the file as it appeared at that time.

	Date/Time	Thumbnail	Dimensions	User	Comr
current	11:12, 3 December 2013		3,446 × 3,244 (10.89 MB)	Birdman86 (talk contribs)	User cre page wi Upload

You cannot overwrite this file.

File usage on Commons

The following page uses this file:

- [User:Birdman86](#)

Metadata

This file contains additional information such as Exif metadata which may have been added by the digital camera, scanner, or software program used to create or digitize it. If the file has been modified from its original state, some details such as the timestamp may not fully reflect those of the original file. The timestamp is only as accurate as the clock in the camera, and it may be completely wrong.

Camera manufacturer	Canon
Camera model	Canon PowerShot A4000 IS
Exposure time	1/500 sec (0.002)
F-number	f/3.2
ISO speed rating	100
Date and time of data generation	20:49, 26 November 2013
Lens focal length	8.266 mm
Orientation	Normal
Horizontal resolution	180 dpi
Vertical resolution	180 dpi
File change date and time	03:12, 3 December 2013
Y and C positioning	Co-sited
Exif version	2.3
Date and time of digitizing	20:49, 26 November 2013
Meaning of each component	1. Y
	2. Cb
	3. Cr
	4. does not exist
Image compression mode	3
APEX shutter speed	8.96875
APEX aperture	3.34375
APEX exposure bias	0
Maximum land aperture	3.34375 APEX (f/3.19)
Metering mode	Pattern
Flash	Flash did not fire, compulsory flash suppression
Supported Flashpix version	1
Color space	sRGB
Focal plane X resolution	19,041.32231405
Focal plane Y resolution	18,989.010989011
Focal plane resolution unit	inches
Sensing method	One-chip color area sensor
File source	Digital still camera
Custom image processing	Normal process
Exposure mode	Auto exposure
White balance	Manual white balance

Digital zoom ratio	1
Scene capture type	Standard
Image width	4,608 px
Image height	3,456 px
