

AccessionIndex: TCD-SCSS-T.20221212.003

Accession Date: 12-Dec-2022

Accession By: Dr.Brian Coghlan

Object name: Dlink DP-G310 Print Server

Vintage: 2004

Synopsis: WiFi and Ethernet enabled print server, S/N: BA2N145000199.

Description:

The Dlink DP-G310 Print Server was introduced on 1st March, 2004. It provided a host interface to a USB 2.0 printer, and facilitated network access to the printer via IEEE 802.11g 54Mbps WiFi or IEEE 802.3 10Base-T 10/100Mbps Ethernet, over which it supported TCP/IP, NetBEUI and AppleTalk network protocols. A mains 240V 0.5A 50-60Hz power supply provided 5V @ 2.5A.

Management of configuration and handling of print queues through TCP/IP was supported over both Telnet and web services, whereas for Windows GUI-oriented installation and management software was included on a CD.

Detailed instructions for installation and used are available at [1], while the Quick Installation Guide is shown in full below on pages 7-14.

The homepage for this catalog is at: <https://www.scss.tcd.ie/SCSSTreasuresCatalog/>
Click 'Accession Index' (1st column listed) for related folder, or 'About' for further guidance. Some of the items below may be more properly part of other categories of this catalog, but are listed here for convenience.

Accession Index	Object and Identification
TCD-SCSS-T.20221212.003	Dlink DP-G310 Print Server. WiFi and Ethernet enabled print server, S/N: BA2N145000199, 2004.
TCD-SCSS-T.20221212.003.01	Dlink DP-G310 Print Server, P/N: DPG310BEU.A1, S/N: BA2N145000199.
TCD-SCSS-T.20221212.003.02	Dlink DP-G310 Print Server power supply, P/N: JTA0302E-C, S/N: R00041700336.
TCD-SCSS-T.20221212.003.03	Dlink DP-G310 Print Server Quick Installation Guide, P/N: PMQPS301UES100.
TCD-SCSS-T.20221212.003.04	Dlink DP-G310 Print Server Quick CD, P/N: CD-DPG310, Version 1.00.
TCD-SCSS-T.20221212.004	Dell 3300 Print Server, Somewhat limited WiFi-enabled print server, S/N: CN-0X6473-72383-4CB-G982, c.2004.

References

1. Dlink, *Wireless G Printer Server User's Guide*, see: <https://www.scss.tcd.ie/SCSSTreasuresCatalog/hardware/TCD-SCSS-T.20221212.003/DP-G310-manual-v3-0-en.pdf>

D-Link®
Building Networks for People

AirPlus G™
Share Your USB Printer Wirelessly

DP-G310



- IEEE 802.11g Standard Up to 54Mbps
- Compact Size
- Easy Installation
- One USB 2.0 Port for Easy Printer Connection

**802.11g/2.4GHz Wireless
Print Server**



Figure 1: Dlink DP-G310 Print Server packaging, top view

802.11g/2.4GHz Wireless

Print Server

AirPlus G™

ENGLISH

- Compact Size
- Built-In IEEE 802.11g Wireless Client
- Supports Ad-Hoc or Infrastructure Mode
- One USB 2.0 Port for Easy Printer Connection
- Easy Web-based Configuration or Setup Using Windows-based Program
- Supports TCP/IP, NetBeui, and AppleTalk Protocols
- IP Address can be Assigned Manually or by DHCP, BOOTP, RARP
- Network Manageable by SNMP and MIB-II (RFC 1213)

DEUTSCH

- Kompakte Abmessungen
- Integrierter drahtloser Client gemäß IEEE 802.11g
- Unterstützt Ad-Hoc- und Infrastructure-Modus
- Ein USB-Port entsprechend der USB-Spezifikation 2.0 für problemlosen Druckeranschluss
- Einfache netzbasierte Konfiguration oder Installation über Konfigurationsprogramm unter Windows
- Unterstützt TCP/IP, NetBeui und AppleTalk-Protokolle
- Die IP-Adresse kann manuell oder über DHCP, BOOTP oder RARP zugewiesen werden
- Netzwerkverwaltung über SNMP und MIB-II (RFC 1213) möglich

FRANCAIS

- Taille compacte
- Client sans fil IEEE 802.11g intégré
- Modes Ad-Hoc et Infrastructure supportés
- 1 port USB 2.0 pour une connexion facile à l'imprimante
- Installation et paramétrage faciles via une interface Web ou Windows
- Protocoles TCP/IP, NetBeui et AppleTalk supportés
- Les adresses IP peuvent être assignées manuellement ou par DHCP, BOOTP, RARP
- Réseau manageable par SNMP et MIB-II (RFC 1213)

ESPAÑOL

- Tamaño reducido
- Cliente inalámbrico IEEE 802.11g integrado
- Soporta modo Ad-Hoc o Infraestructura
- Un puerto USB 2.0 para conectar fácilmente la impresora
- Fácil configuración basada en Web a través de un programa basado en Windows
- Soporta protocolos TCP/IP, NetBeui y AppleTalk
- La dirección IP puede asignarse manualmente o por DHCP, BOOTP, RARP
- Red gestionable por SNMP y MIB-II (RFC 1213)

ITALIANO

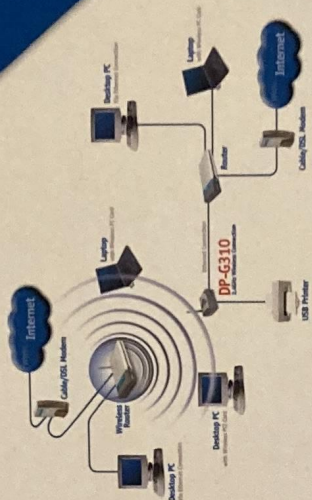
- Dimensioni compatte
- Client Wireless IEEE 802.11g incorporato
- Supporto modalità Ad-Hoc o Infrastruttura
- Porta USB 2.0 per una semplice connessione di stampanti
- Semplice configurazione basata su Web o con programma basato su Windows
- Supporto protocolli TCP/IP, NetBeui, e AppleTalk
- Indirizzo IP assegnato manualmente o via DHCP, BOOTP, RARP

РУССКИЙ

- Компактный размер
- Встроенный беспроводной адаптер IEEE 802.11g
- Поддержка режимов работы беспроводной сети: «точка-точка» и инфраструктура
- Одноразовый порт USB 2.0 для подключения принтера
- Удобная настройка через Web-интерфейс или при помощи утилиты для Windows
- Поддержка протоколов TCP/IP, NetBeui и AppleTalk
- Назначение IP-адреса вручную или при помощи DHCP, BOOTP, RARP
- Серверное управление посредством SNMP и MIB-II (RFC 1213)

中文

- 外型小巧
- 内置IEEE 802.11g无线客户端
- 支援Ad-Hoc或Infrastructure模式
- 1個USB 2.0埠，易於連接印表機
- 透過簡易的Web介面管理程式或透過Windows安裝程式
- 支援TCP/IP, NetBeui和AppleTalk協定
- 用DHCP, BOOTP, RARP自動分配IP位址
- 支援SNMP和MIB-II (RFC 1213)網路管理

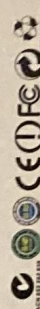


Up to
54
Mbps!

D-Link AirPlus™ G Products	
Standard 802.11b	Up to 5X
1X	

Prices and specifications subject to change without notice.
D-Link is a registered trademark of D-Link Corporation/D-Link System, Inc.
All other trademarks are the property of their respective manufacture.
©Copyright 2004, All rights reserved.

Made In Taiwan



Model No.: DP-G310	UPC Code / BEU
MAC ID: 000F3D56FC58	7 98869 26578 9
H/W Ver.:A1 F/W Ver.:1.10	S/N: BA2N145000199

Wireless



Figure 3: Dlink DP-G310 Print Server packaging, end views



Figure 4: Dlink DP-G310 Print Server packaging, unpacking



Figure 5: Dlink DP-G310 Print Server, top, bottom, and side views



Figure 6: Dlink DP-G310 Print Server power supply,, bottom view

D-Link Quick Installation Guide

This product can be setup using any current web browser, i.e., Internet Explorer 6 or Netscape Navigator 7.0



DP-G310
AirPlus™ G 2.4GHz
Wireless Print Server

Before You Begin

You will need an Ethernet-enabled device, such as a laptop or desktop computer and a USB printer that will connect to the DP-G310.

Important: TURN OFF the power to the printer before installing the DP-G310.

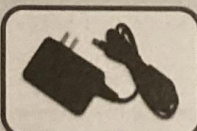
Check Your Package Contents



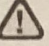
DP-G310 AirPlus™ G Wireless USB Print Server



CD-ROM (Software, Manual and Warranty)



5V DC 2.5A Power Adapter

 Using a power supply with a different voltage rating will damage this product and void its warranty.

If any of the above items are missing, please contact your reseller.

print server = 192.168.0.10
... MAC == 00:0F:3D:55:FC:58
wireless MAC == 00:09:5B:2D:2A:58 CH3

©2004 D-Link Systems, Inc. All rights reserved. Trademarks or registered trademarks are the property of their respective holders. Software and specifications subject to change without notice. DP-G310_03092004

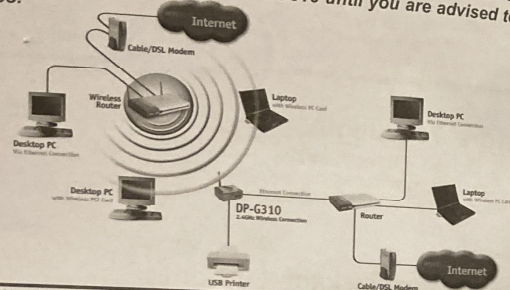
usb portname = PS-55FC58-U1

See rear page

Figure 7: Dlink DP-G310 Print Server, closeup top view

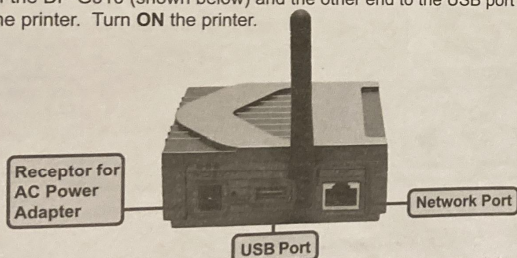
1 Connecting The DP-G310 To Your Network

First, insert one end of a straight-through CAT5 Ethernet RJ-45 cable into the "Network Port" (shown below.) Connect the other end of the cable to the LAN port of the gateway or switch. **Note: Do not connect the power cord to the DP-G310 until you are advised to do so.**



Warning!
Only a USB printer may be connected to the USB port of the DP-G310. Do not connect any other USB device to the USB port; doing so may damage the unit, voiding the warranty for this product.

Next, make sure that the Printer is turned OFF. Using the USB cable, connect one end of the cable to the USB port of the DP-G310 (shown below) and the other end to the USB port of the printer. Turn ON the printer.



Then, plug one end of the power adapter into the DP-G310 and the other end into your electric outlet. The DP-G310 will turn on and begin a self-test.

For Mac OS printing, please refer to manual (.pdf) located on the CD-ROM.

2 Setting up your DP-G310 for network printing in Windows XP

For additional Windows operating system setup or information on the web-management interface, refer to the manual located on the CD-ROM.

The factory default IP address of the DP-G310 is 192.168.0.10. In order to network to the printer through the DP-G310, the DP-G310 must have the same IP network settings as your network. IP address can be assigned manually or automatically by DHCP, BOOTP or RARP. To access the print server's web configuration, manually assign an IP address on one of the wired PC's on your network to the same subnet as the print server.

Go to **Start > right click on My Network Places > select Properties > Double-click on the Network Connection** associated with your Network Adapter.

Click Internet Protocol (TCP/IP)

Click Properties

Input a static IP address in the same range as the print server.

Select Use the following IP address

IP address: 192.168.0.52
Subnet mask: 255.255.255.0

Click OK

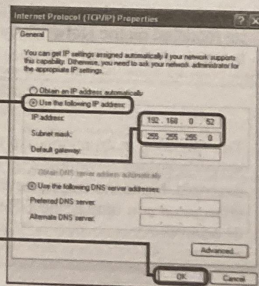
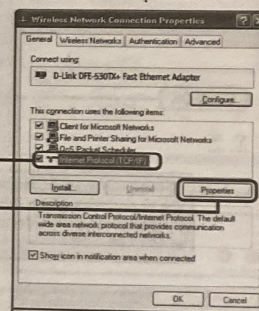
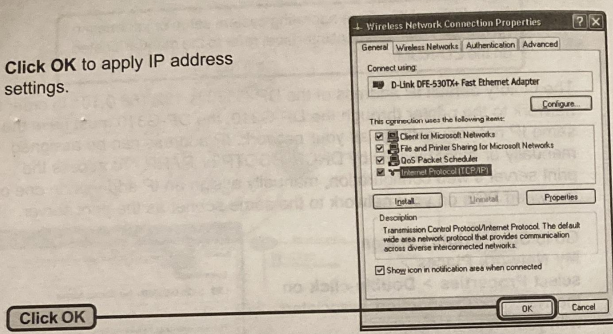


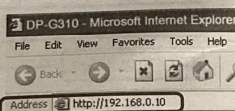
Figure 8: Dlink DP-G310 Print Server, closeup top view

2 Setting up your DP-G310 for network printing in Windows XP (continued)

Click **OK** to apply IP address settings.

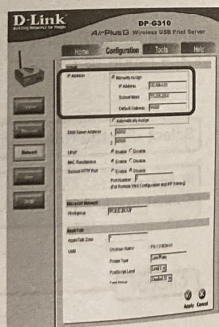


Using your web browser enter the IP address of the DP-G310. By default the IP address is set to 192.168.0.10



The IP address of the DP-G310 can be modified on the **Network** tab of the web configuration menu.

The following instructions use the print server's default IP address as an example. Make the appropriate changes if you modify the DP-G310's IP address.

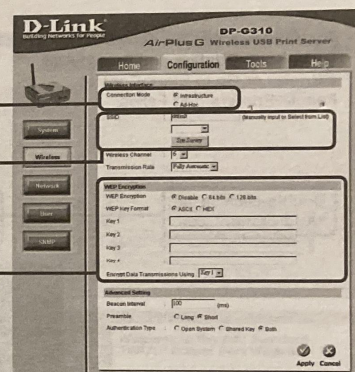


4


2 Setting up your DP-G310 for network printing in Windows XP (continued)

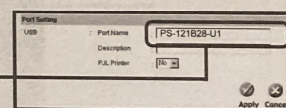
Click on the **Configuration** tab to view the current **Wireless Settings**.

- 1 Select your Connection Mode
- 2 Enter the SSID of the remote access point or wireless router you wish to connect to.
- 3 If you would like to set WEP Encryption, select the encryption level and the key here.



Click on the **System** tab to view the current **Port Settings**.

-  Write down on a piece of paper the Port name that you wish to use.



- ① **What is Infrastructure and Ad-Hoc Mode?**
Ad-Hoc: Refers to two or more 802.11b wireless devices that communicate directly with one another without using an access point or any connection to a wired network.
Infrastructure: Refers to an 802.11 network in which wireless devices communicate with each other by first going through an Access Point (AP) or wireless router.
 - ② **What is an SSID?**
A workgroup name of your Wireless Network. All wireless devices must all have the same SSID to communicate on the Wireless Network. All D-Link Wireless devices have the default SSID of default, all lower case.
 - ③ **How does WEP Work?**
64 bit WEP encryption uses a 10 hexadecimal character key. 128 bit WEP uses a 26 hexadecimal character key. The WEP encryption key must match the WEP settings on your AP or wireless router to connect properly.

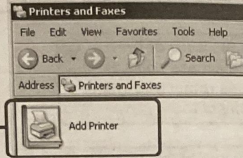
5

Figure 9: Dlink DP-G310 Print Server, closeup top view

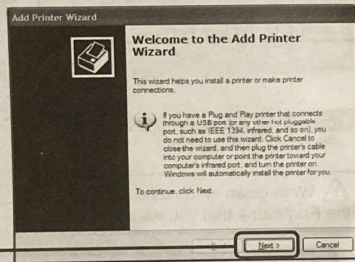
2 Setting up your DP-G310 for network printing in Windows XP (continued)

For Windows XP:
Go to Start>Printers and Faxes>Add a Printer or Go to Start>Control Panel> Printers and Faxes

Double-click on the "Add Printer" icon

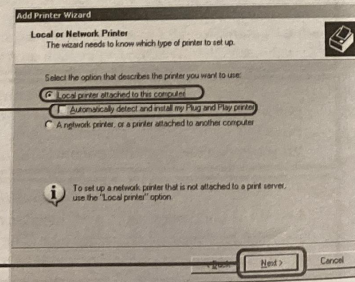


Click Next



Select "Local Printer."

Please make sure to deselect Automatically detect and install my Plug and Play printer.



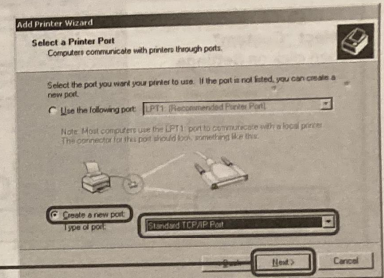
Click Next

6

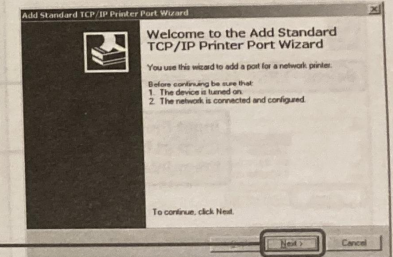
2 Setting up your DP-G310 for network printing in Windows XP (continued)

Select "Create a new port."
At the pull-down menu, highlight "Standard TCP/IP Port."

Click Next

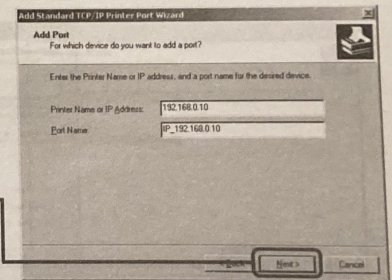


Click Next



Type in the IP address of the print server. (i.e. 192.168.0.10)
The port name will automatically be filled in.

Click Next



⚠ This may take a few seconds

7

Figure 10: Dlink DP-G310 Print Server, closeup top view

2 Setting up your DP-G310 for network printing in Windows XP (continued)

Select "Custom"
Then click on Settings.

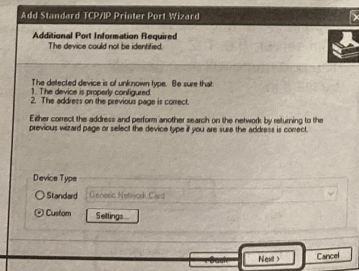
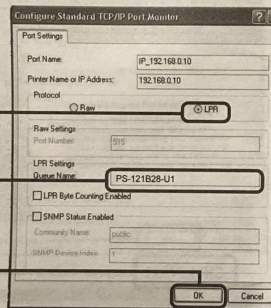
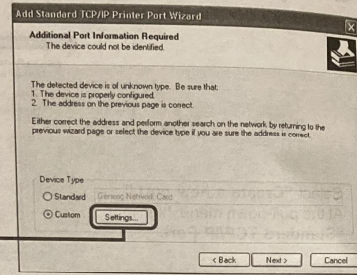
Click Settings

Select "LPR"

Input the port name of
the port being used by
the printer

Click OK

Click Next



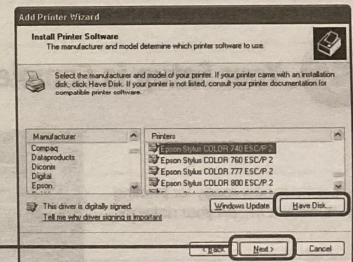
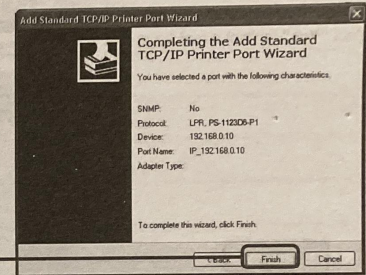
8

2 Setting up your DP-G310 for network printing in Windows XP (continued)

Click Finish

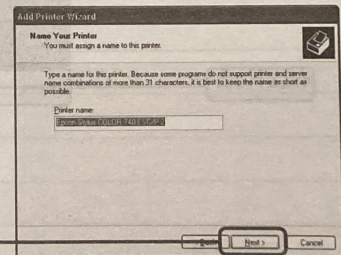
In this window, scroll down to find
your printer. (If it is not listed, insert
the driver CD or diskette that came
with your printer.)
Click on "Have Disk..."
Then, scroll down and highlight the
printer.

Click Next



At this screen, you can input a
name for this printer.

Click Next

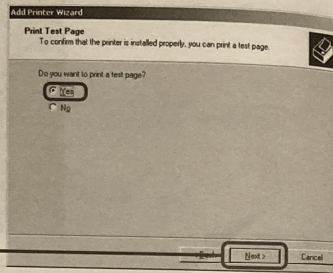


9

Figure 11: Dlink DP-G310 Print Server, closeup top view

2 Setting up your DP-G310 for network printing in Windows XP (continued)

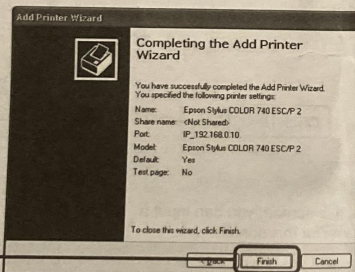
Select "Yes" to print a test page



Click Next

3 Your Setup is Complete!

The printer is now ready for printing with Windows XP, on your network.



Click Finish

MEMO

Figure 12: Dlink DP-G310 Print Server, closeup top view

Windows XP Printer Test Page

Appendix:

DP-G310 Printer Compatibility List For Windows

The Canon Printer

Canon BJC-55, 85
Canon S100SP
Canon S200SP
Canon S300
Canon S330
Canon S400SP
Canon S450
Canon S520
Canon S600
Canon S750
Canon S4500
Canon S6300
Canon S9000

The Epson Printer

Epson Stylus Color 900
Epson Stylus Color 1160
Epson Stylus Color 2200
Epson Stylus Photo 720
Epson Stylus Photo 810, 820, 830, 890
Epson Stylus Photo 900
Epson Stylus Photo 1280, 1290
Epson Stylus C41UX, C405, C42UX
Epson Stylus C60, C61, C62
Epson Stylus C80, C82

The Lexmark Printer

Lexmark Z13
Lexmark Z25
Lexmark Z33
Lexmark Z35
Lexmark Z43
Lexmark Z45
Lexmark Z53

The HP Printer

HP DeskJet 640C, 656C
HP DeskJet 845C
HP DeskJet 920C
HP DeskJet 948C
HP DeskJet 960C
HP DeskJet 990Cxi, 995C
HP DeskJet 1125C, 1180C
HP DeskJet 1220C
HP DeskJet 3320
HP DeskJet 3420, 3425
HP Color Inkjet CP1700
HP LaserJet 1200
HP LaserJet 2200, 2200d

Figure 13: Dlink DP-G310 Print Server Manual, Appendix

Eurocom :



gateway 192.168.0.1
DNS 159.134.237.6
159.134.248.17
134.226.32.57
cs.fed.ie
net

Wireless : region

Europe

Station

DG824M

SSID

Wireless

channel

3

WEP

none

broadcast ssid

enabled

Trusted PCs only:

kabinett:

00 02 2D 3D 28 64

printsvr:

00 0F 3D 55 FC 58

USB Postname

PS-55FC58-U1

printserver name

335-425-0171 54Mbps Wireless USB Print
M Code : DP-G310
Order : 635463/02 20/09/04
OL : 36Y0
54Mbps



D-Link



RECYCLABLE

Ver.1.00

PMQPS301UES100

Figure 14: Dlink DP-G310 Print Server Manual, back page

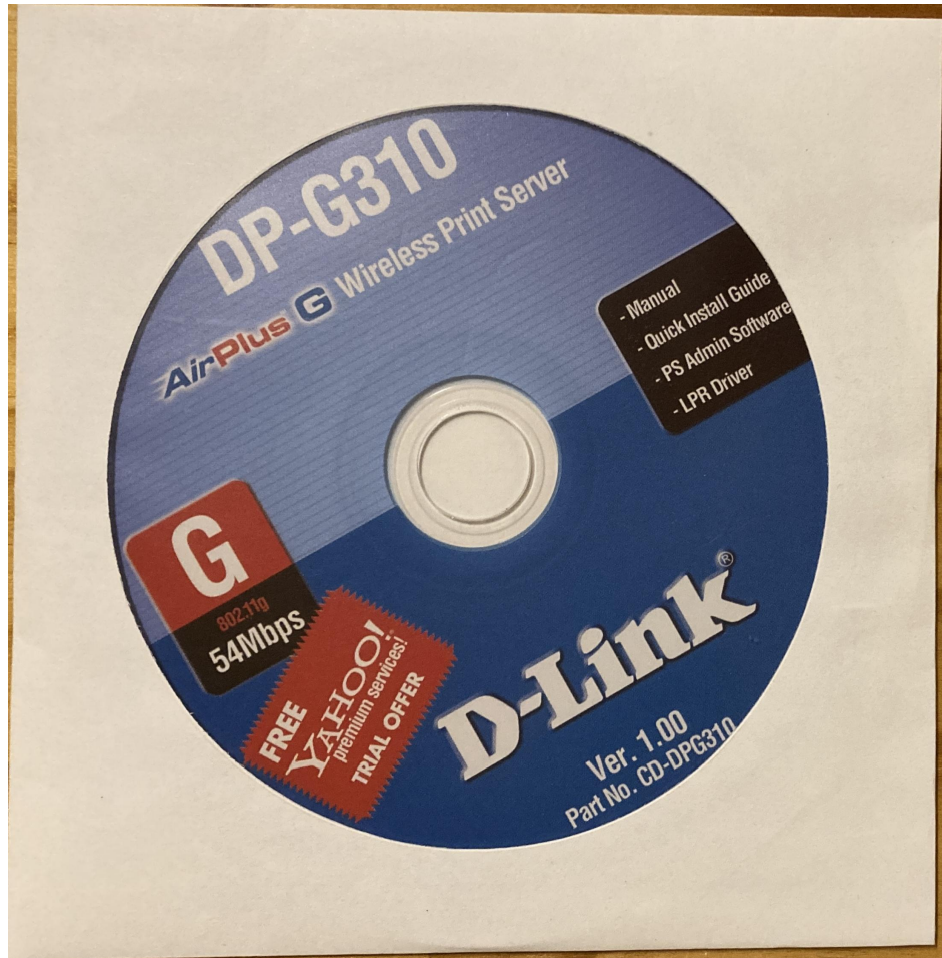


Figure 15: Dlink DP-G310 Print Server CD