

AccessionIndex: TCD-SCSS-T.20121208.046
 Accession Date: 8-Dec-2012
 Accession By: Prof.J.G.Byrne, Dr.B.A.Coghlan
 Object name: ISA cards for IBM PCs and compatibles
 Vintage: c.198x
 Synopsis: Plugin cards for the IBM PC ISA expansion bus.

Description:

The Industry Standard Architecture (ISA) is the 16-bit internal bus of IBM PC/AT and similar computers based on the Intel 80286 and its immediate successors during the 1980s. Figure 1 illustrates the differences in the bus connector sizes. The bus was largely backward compatible with the 8-bit bus of the 8088-based IBM PC, including the IBM PC/XT as well as IBM PC compatibles, and was originally called the PC bus (8-bit) or AT bus (16-bit).

The homepage for this catalog is at: <https://www.scss.tcd.ie/SCSSTreasuresCatalog/>
 Click 'Accession Index' (1st column listed) for related folder, or 'About' for further guidance.
 Some of the items below may be more properly part of other categories of this catalog, but are listed here for convenience.

Accession Index	Location, Figures	Vintage	Object and Identification
TCD-SCSS-T.20121208.046.01	ORI, Figs.2-6	c.1987	Unidentified 3.5-inch hard disk ISA card for PCs
TCD-SCSS-T.20121208.046.02	ORI, Figs.7-9	c.1994	Hauppauge WinTV-Prism PAL-1 5055 Rev C TV tuner ISA card for PCs
TCD-SCSS-T.20121208.046.03	ORI, Figs.10-12	c.198x	PC ISA card, possibly for high-speed serial-line, maybe for X25.
TCD-SCSS-T.20121208.046.04	Lloyd, Figs.13-15	c.198x	Unidentified Combi (Coax+RJ45) Ethernet ISA Card, uses RTL8019, labelled CY-01A
TCD-SCSS-T.20121208.046.05	Lloyd	c.198x	
TCD-SCSS-T.20121208.046.06	Lloyd	c.198x	
TCD-SCSS-T.20121208.046.07	Lloyd	c.198x	
TCD-SCSS-T.20121208.046.08	Lloyd	c.198x	
TCD-SCSS-T.20121208.046.09	Lloyd	c.198x	
TCD-SCSS-T.20121208.046.10	Lloyd	c.198x	
TCD-SCSS-T.20121208.046.11	Lloyd	c.198x	
TCD-SCSS-T.20121208.046.12	Lloyd	c.198x	
TCD-SCSS-T.20121208.046.13	Lloyd	c.198x	
TCD-SCSS-T.20121208.046.14	Lloyd	c.198x	
TCD-SCSS-T.20121208.046.15	Lloyd	c.198x	

References:

1. Wikipedia, *Industry Standard Architecture*, ISA bus, see: https://en.wikipedia.org/wiki/Industry_Standard_Architecture
 Last browsed to on 25-May-2023.



Figure 1: 8-bit XT, 16-bit ISA, EISA (top to bottom), courtesy Wikipedia

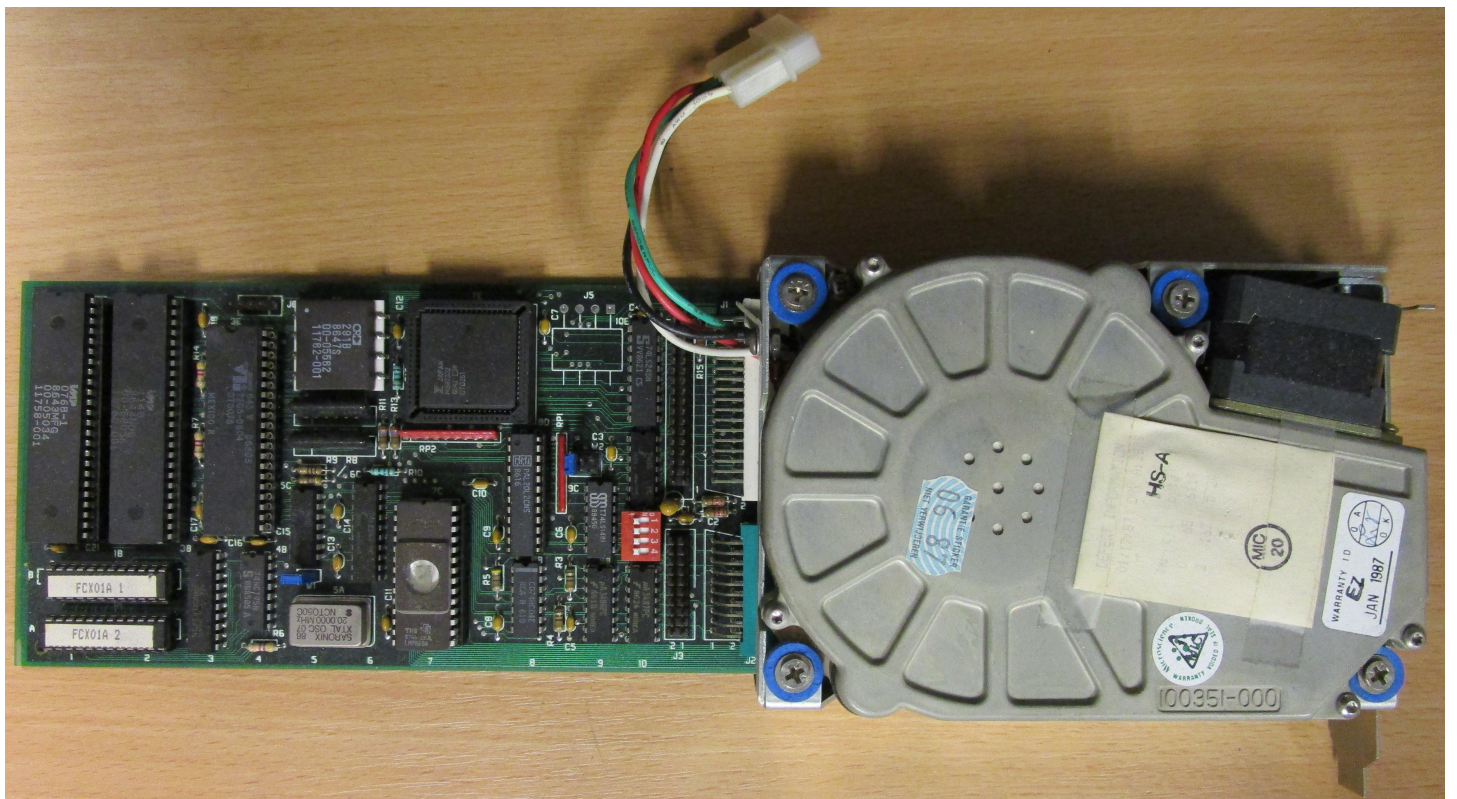


Figure 2: Unidentified 3.5-inch hard disk ISA card, top view
TCD-SCSS-T.20121208.046.01

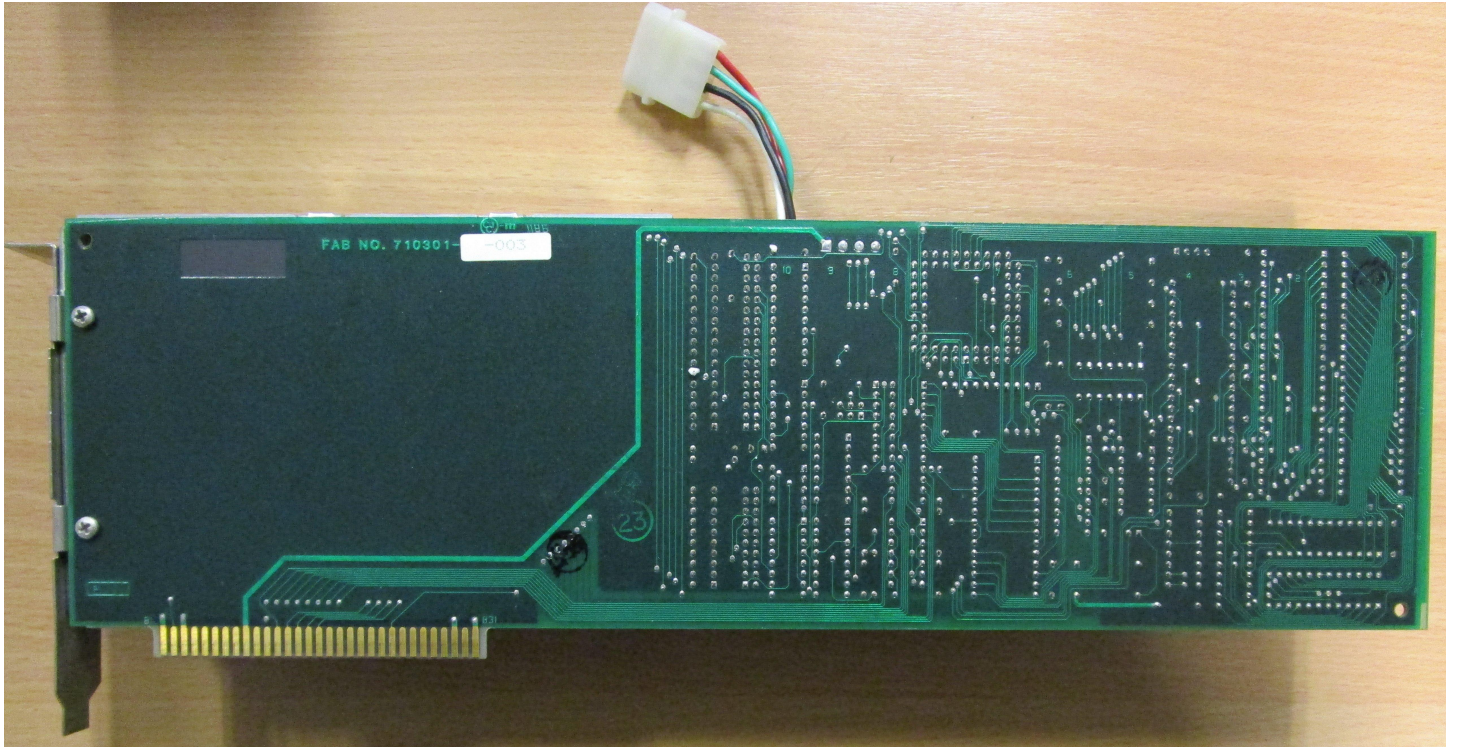


Figure 3: Unidentified 3.5-inch hard disk ISA card, bottom view
TCD-SCSS-T.20121208.046.01

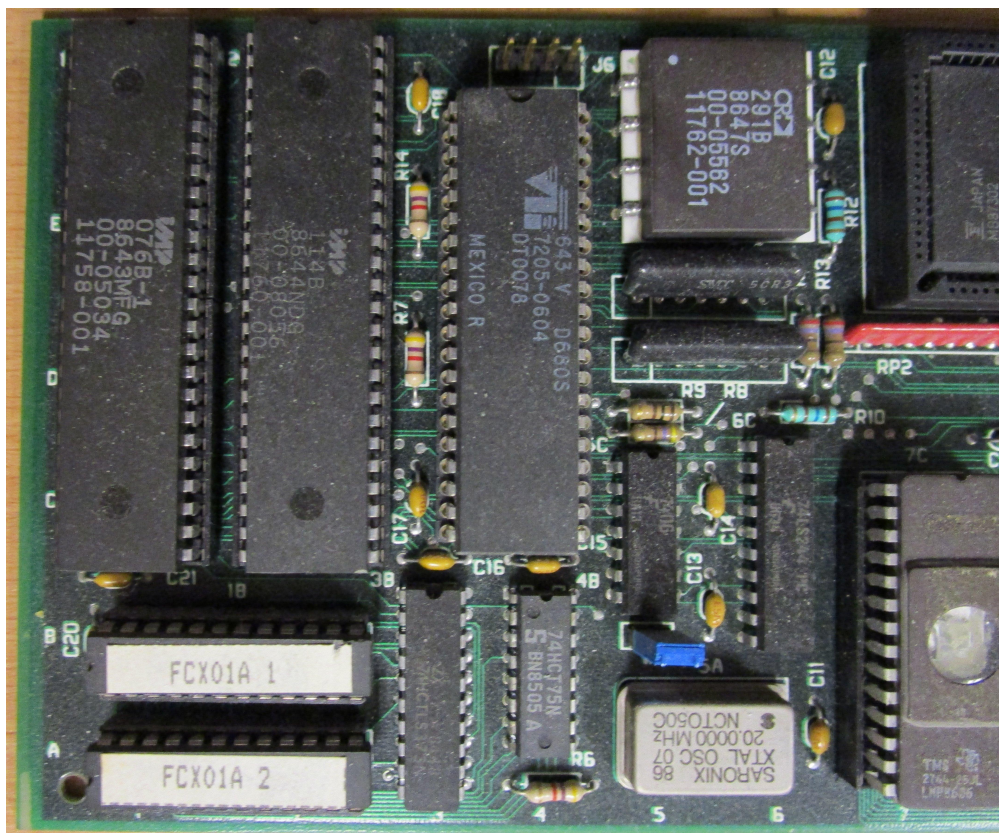


Figure 4: Unidentified 3.5-inch hard disk ISA card, left front closeup
TCD-SCSS-T.20121208.046.01

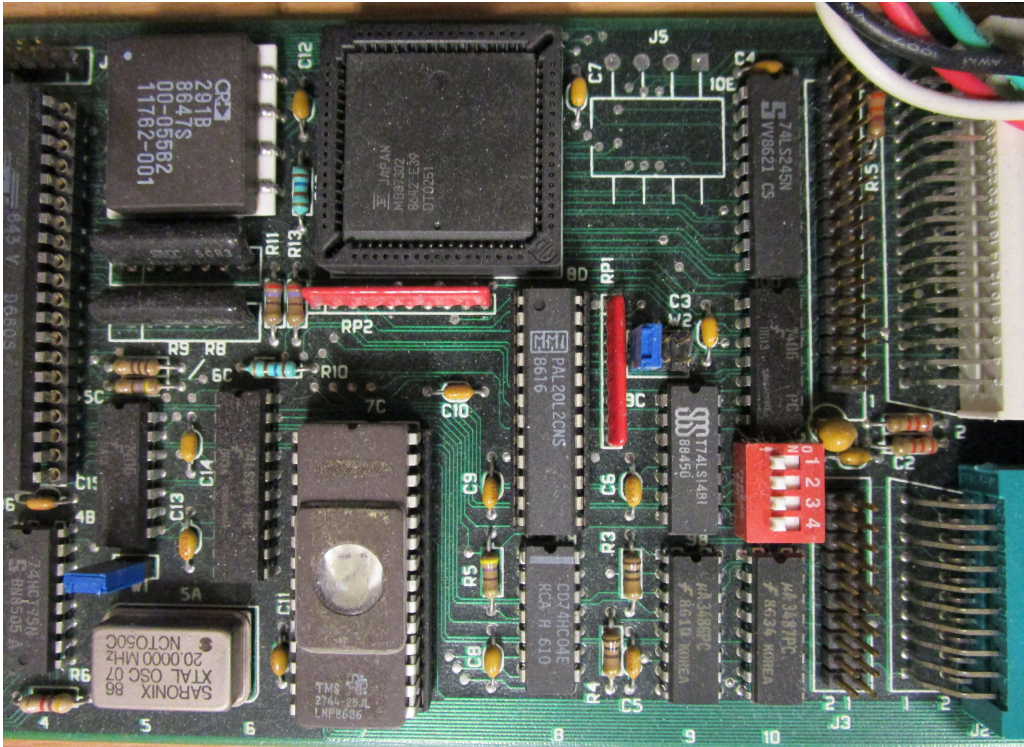


Figure 5: Unidentified 3.5-inch hard disk ISA card, right front closeup
TCD-SCSS-T.20121208.046.01

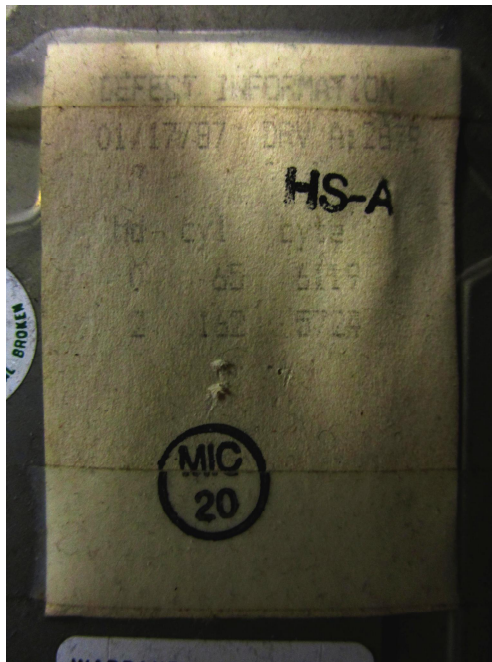


Figure 6: Unidentified 3.5-inch hard disk ISA card, manufacturing label, enhanced
Enhancement function: x^3
"Defect Information
01/17/87 [17-Jan-1987]
Head, Cylinder, Byte
0, 65, 6119
2, 162, 5724"
TCD-SCSS-T.20121208.046.01

*Figure 7: Hauppauge WinTV-Prism PAL-1 TV tuner ISA card, top view
TCD-SCSS-T.20121208.046.02*

*Figure 8: Hauppauge WinTV-Prism PAL-1 TV tuner ISA card, bottom view
TCD-SCSS-T.20121208.046.02*



*Figure 9: Hauppauge WinTV-Prism PAL-1 TV tuner ISA card, side view
TCD-SCSS-T.20121208.046.02*

*Figure 10: PC ISA card, possibly for high-speed serial-line, maybe for X25, top view
TCD-SCSS-T.20121208.046.03*

*Figure 11: PC ISA card, possibly for high-speed serial-line, maybe for X25, bottom view
TCD-SCSS-T.20121208.046.03*

*Figure 12: PC ISA card, possibly for high-speed serial-line, maybe for X25, side view
TCD-SCSS-T.20121208.046.03*

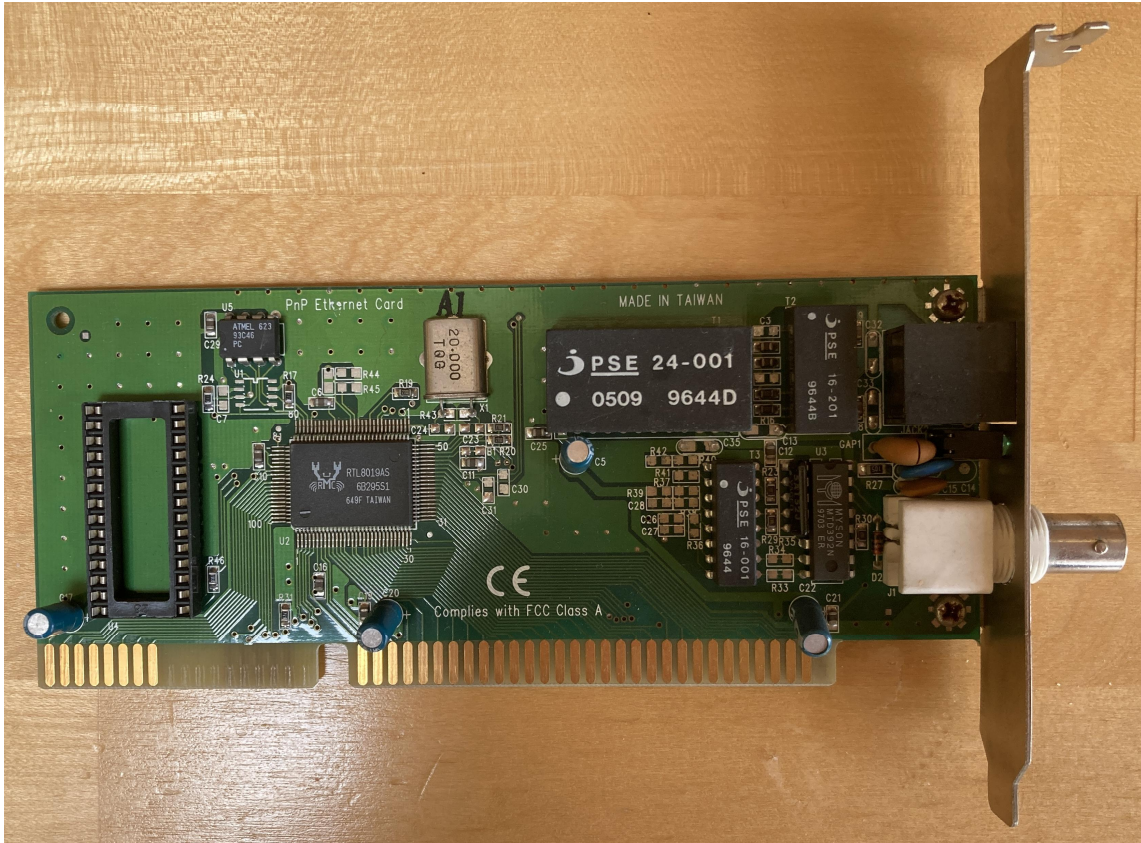


Figure 13: Unidentified Combi (Coax+RJ45) Ethernet ISA Card, uses RTL8019, labelled CY-01A, top view
TCD-SCSS-T.20121208.046.04



Figure 14: Unidentified Combi (Coax+RJ45) Ethernet ISA Card, uses RTL8019, labelled CY-01A, bottom view
TCD-SCSS-T.20121208.046.04

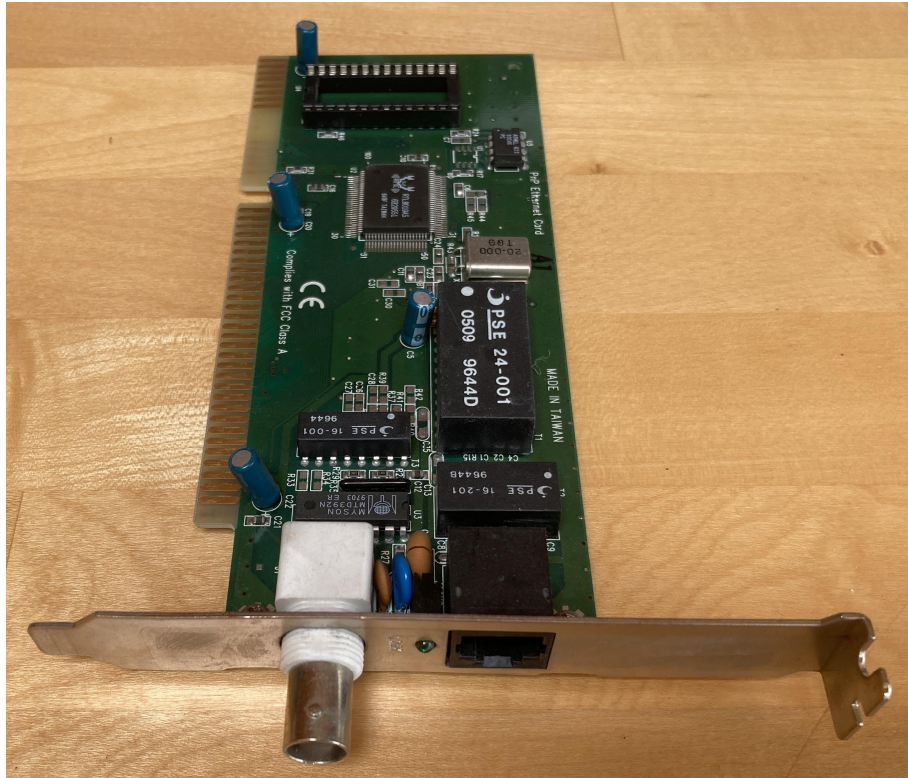


Figure 15: Unidentified Combi (Coax+RJ45) Ethernet ISA Card, uses RTL8019, labelled CY-01A, side view
TCD-SCSS-T.20121208.046.04